



FOYER

- to add grill (powder coated) and window (white colour)



Reference:



DRY KITCHEN

- to hack all existing tiles, concrete top and remove cabinet
- to relocate water pipe (move down) :
- to relocate and add power point
- to install new tiles (backsplash part only):



- to change existing door to door with glass design
- to change window to fix glass window



WET KITCHEN

- to hack and remove all existing tiles, concrete top and cabinet
- to install new tiles (backsplash part only)
- to change new sliding window
- to relocate water tap to window side
- to add power point
- to hack and remove door and window part:



- to level kitchen floor and install new tiles



LAUNDRY

- to hack and remove all existing tiles and toilet amenities to change to laundry room
- to change door to swing open door
- to add power point



COMMON BATHROOM

- to hack and remove all tiles, concrete top, mirror and toilet bowl
- to install new tiles and toilet amenities

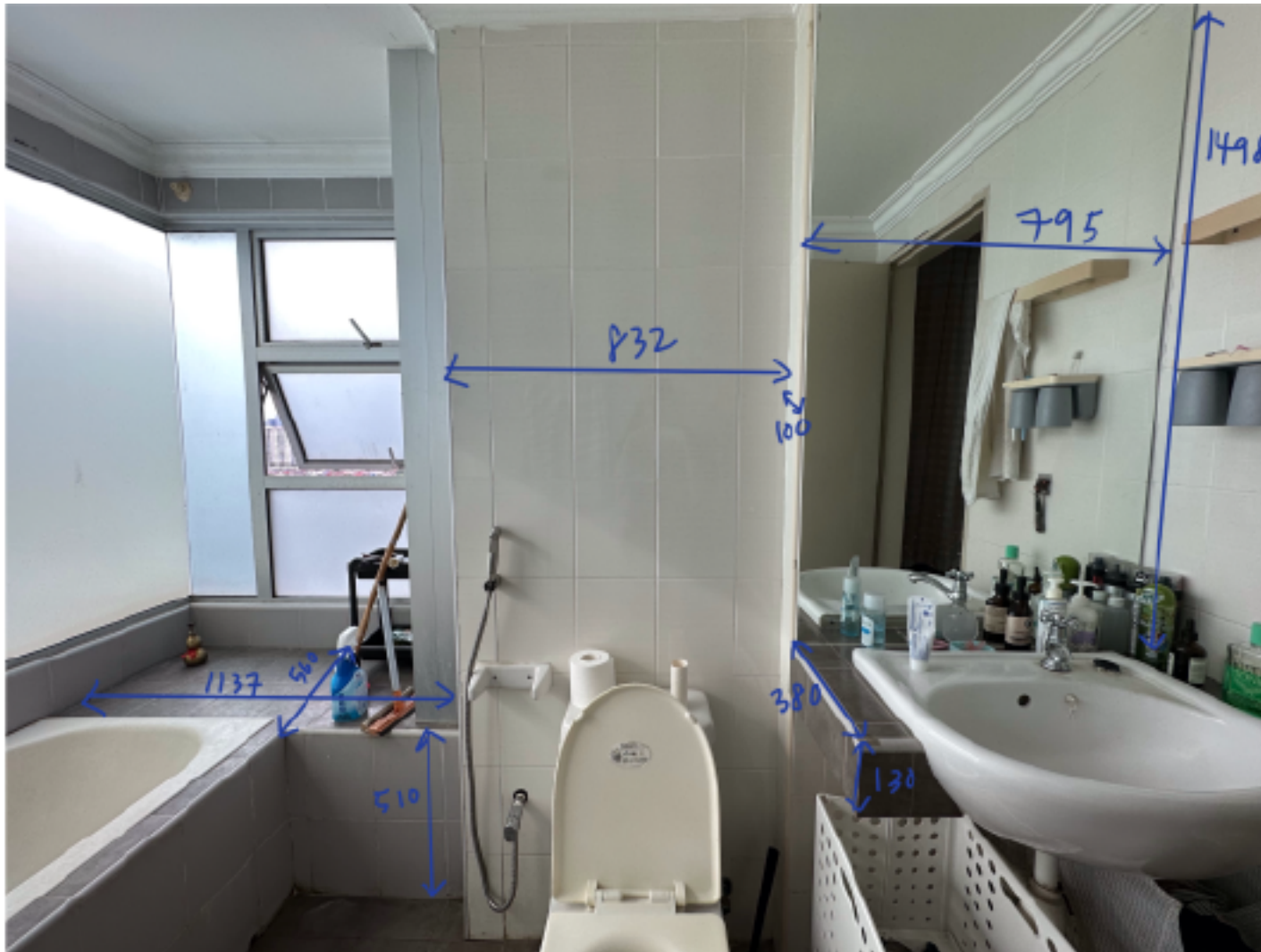


- to install window mounted type ventilation fan



MASTER BATHROOM

- to hack and remove all tiles, concrete top, mirror, bath tub, toilet bowl
- to install new tiles, toilet amenities and water heater
- to add ceiling mounted type ventilation fan
- to add power point

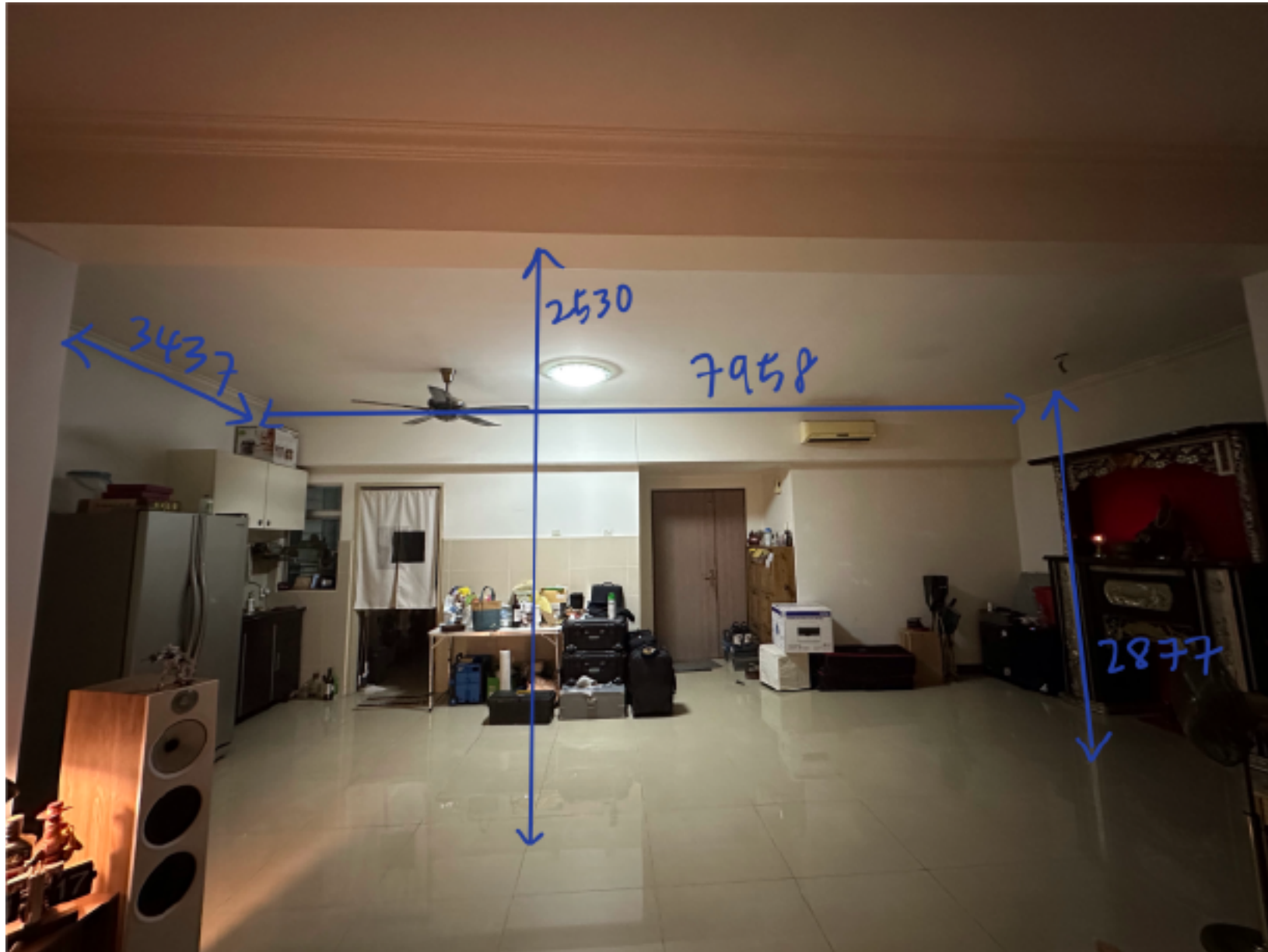




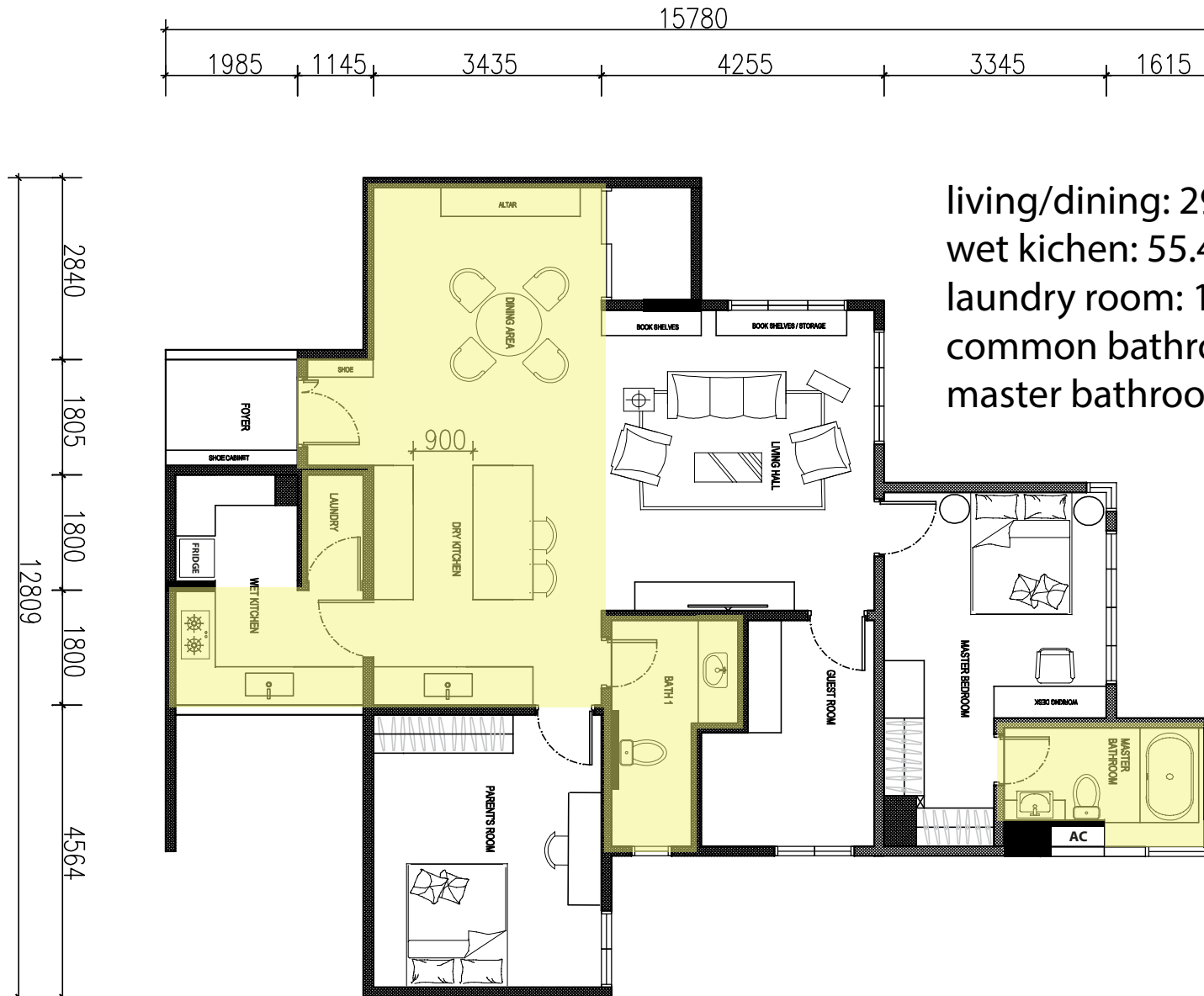


DINING/LIVING ROOM

- to install plaster ceiling, light points and 1 fan point



Areas require new plaster ceiling:



Areas require new painting:

