



Proposal  
Layout For GAM  
Office  
Kota Kinabalu  
(Option 4)

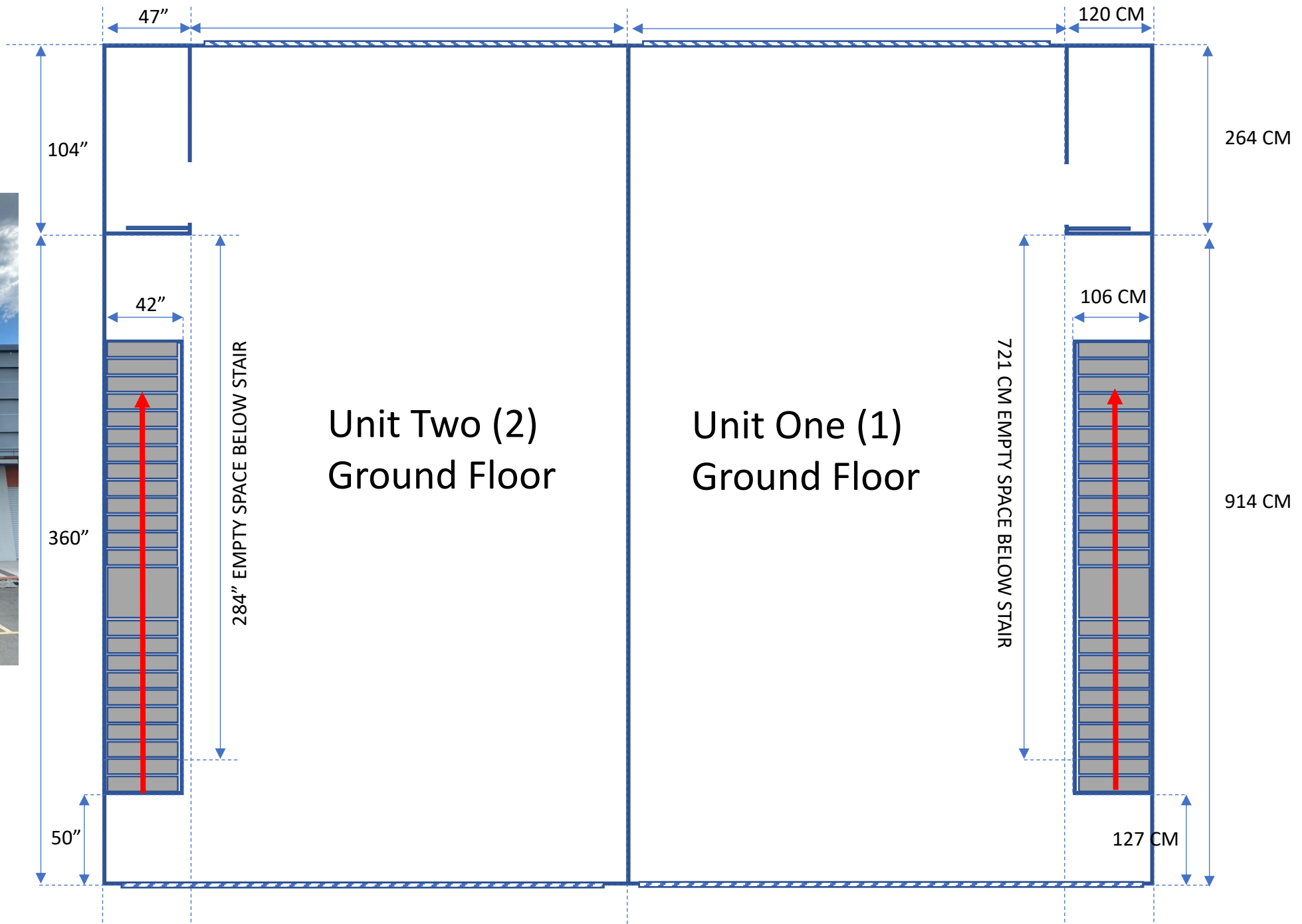


# UNIT 2 UNIT 1



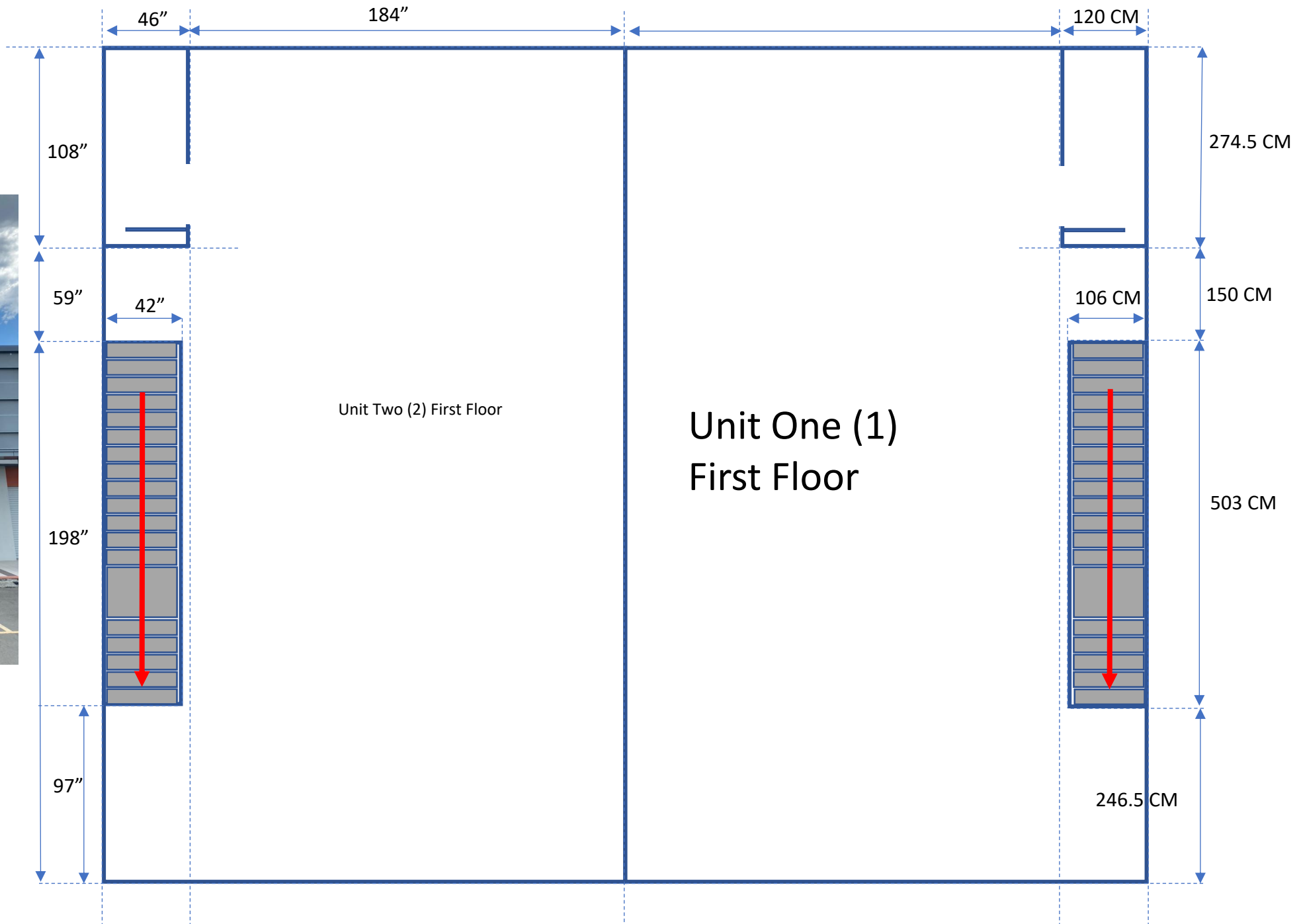
DIMENSION

# DIMENSION Ground Floor



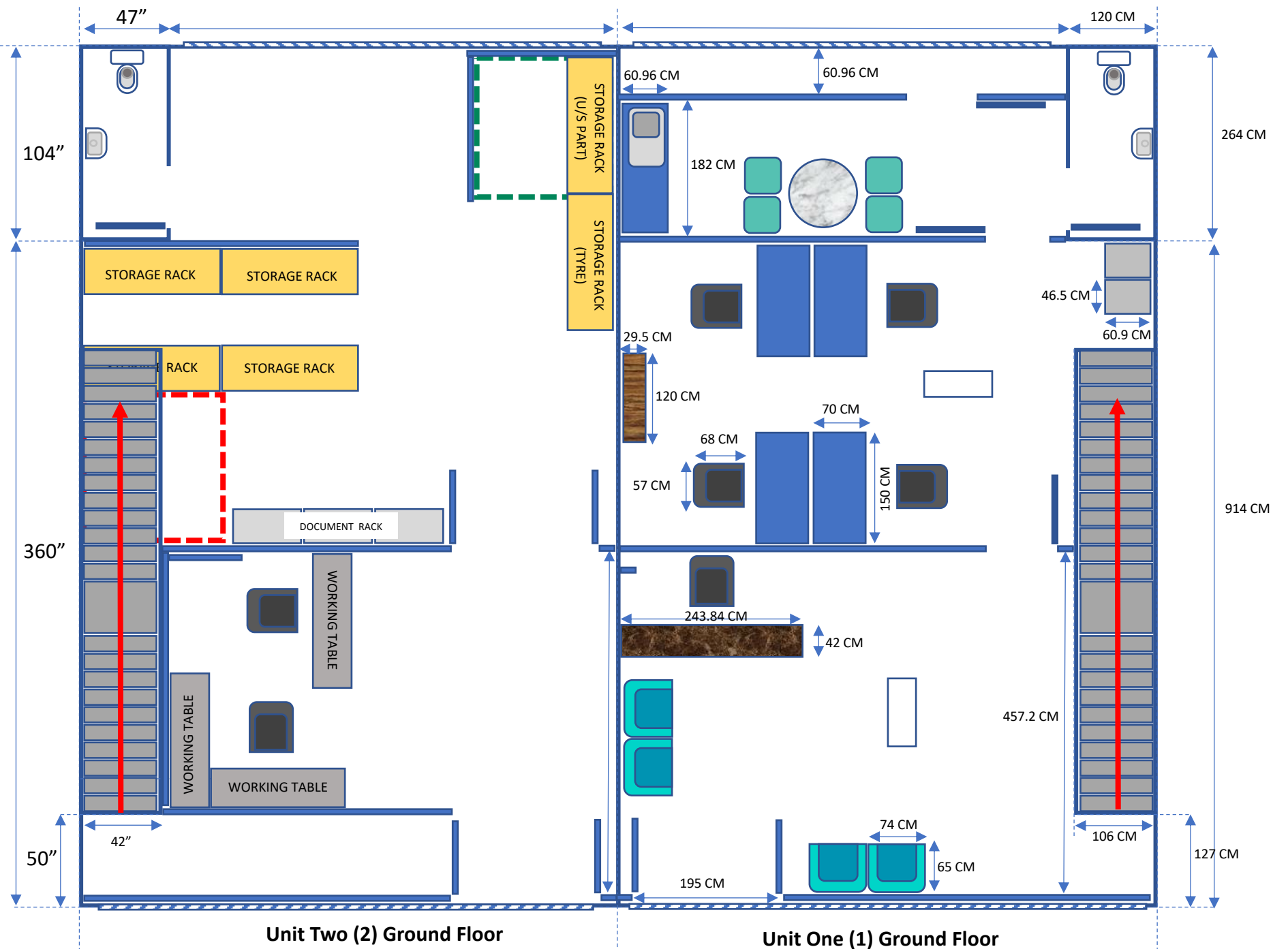
# DIMENSION

## First Floor

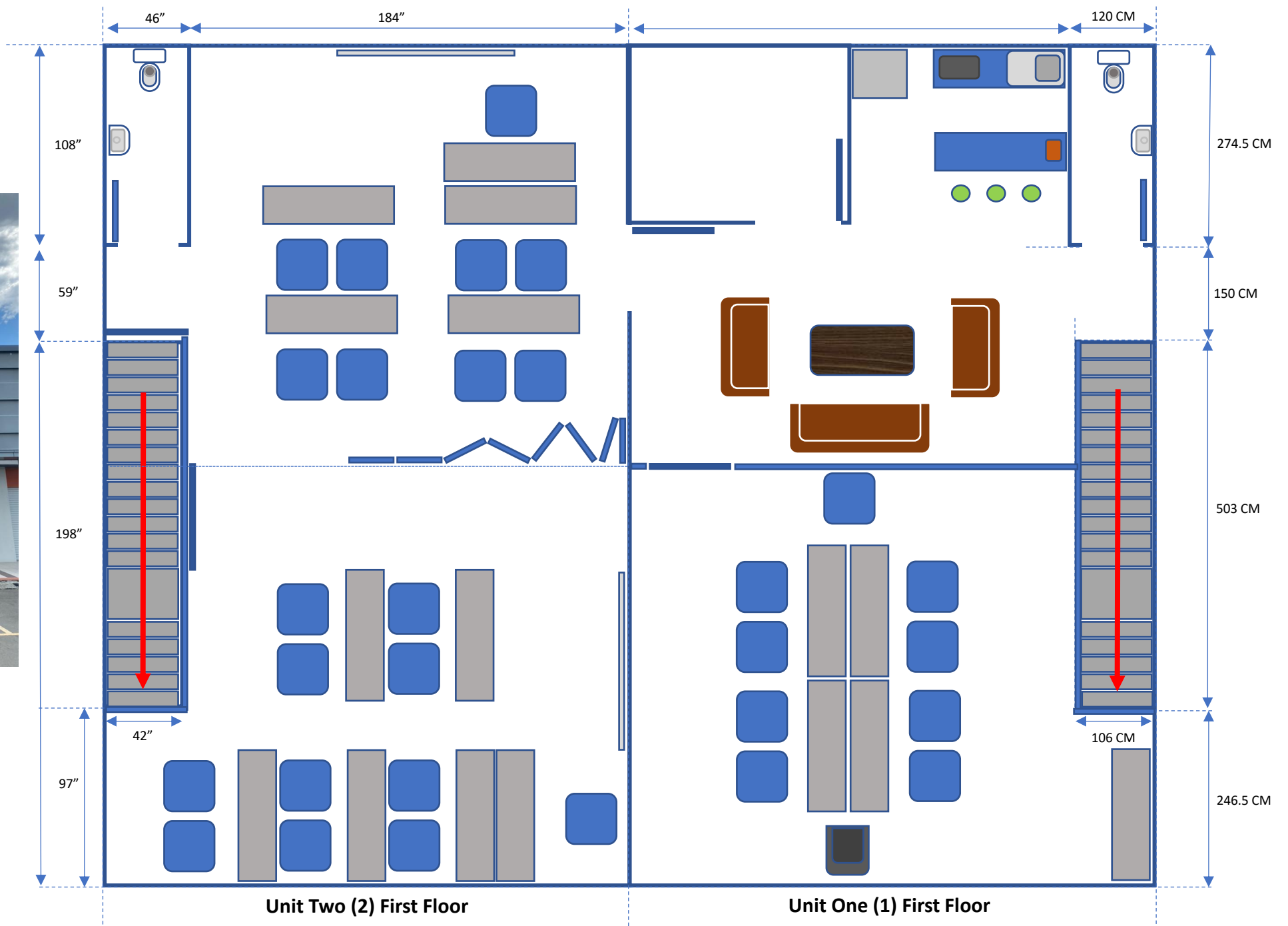
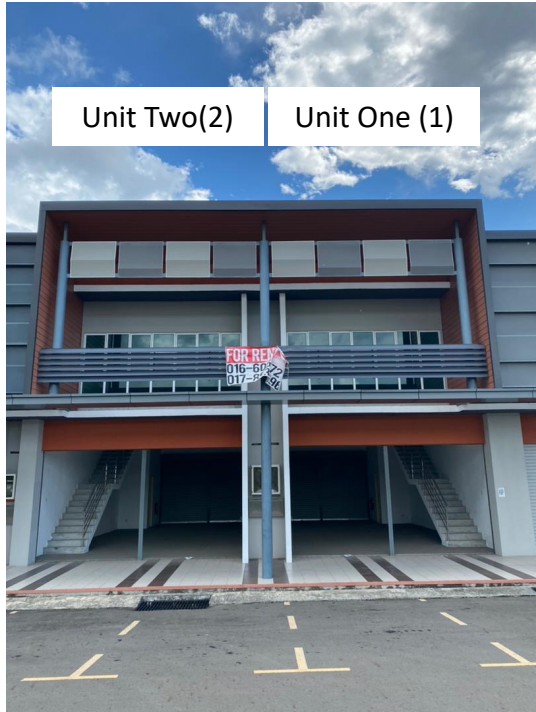


PROPOSED  
LAYOUT

# PROPOSED LAYOUT Ground Floor

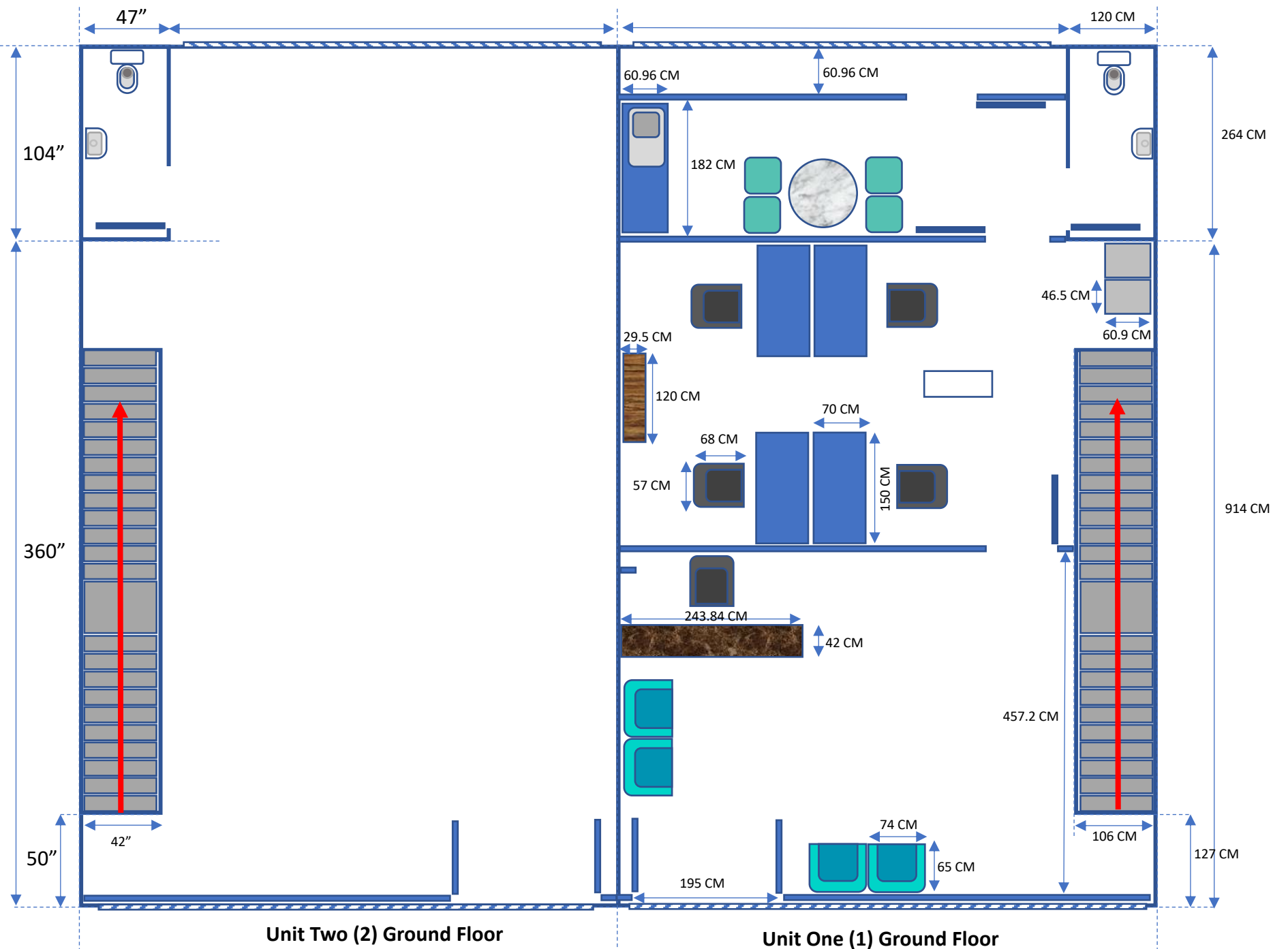
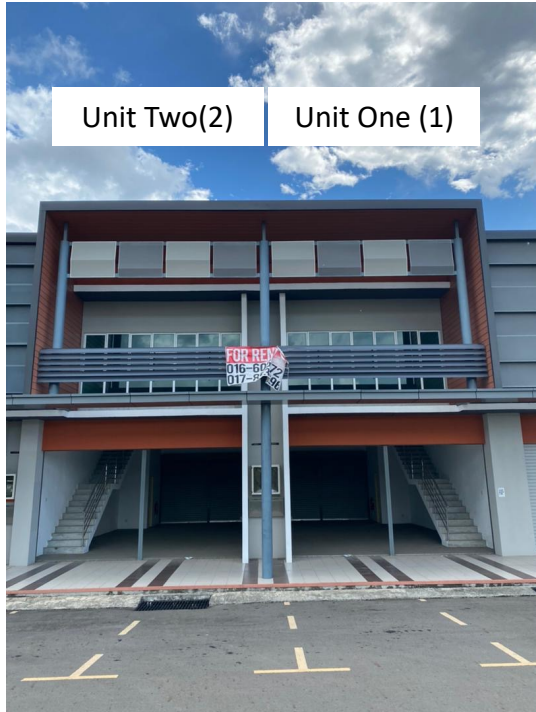


# DIMENSION First Floor

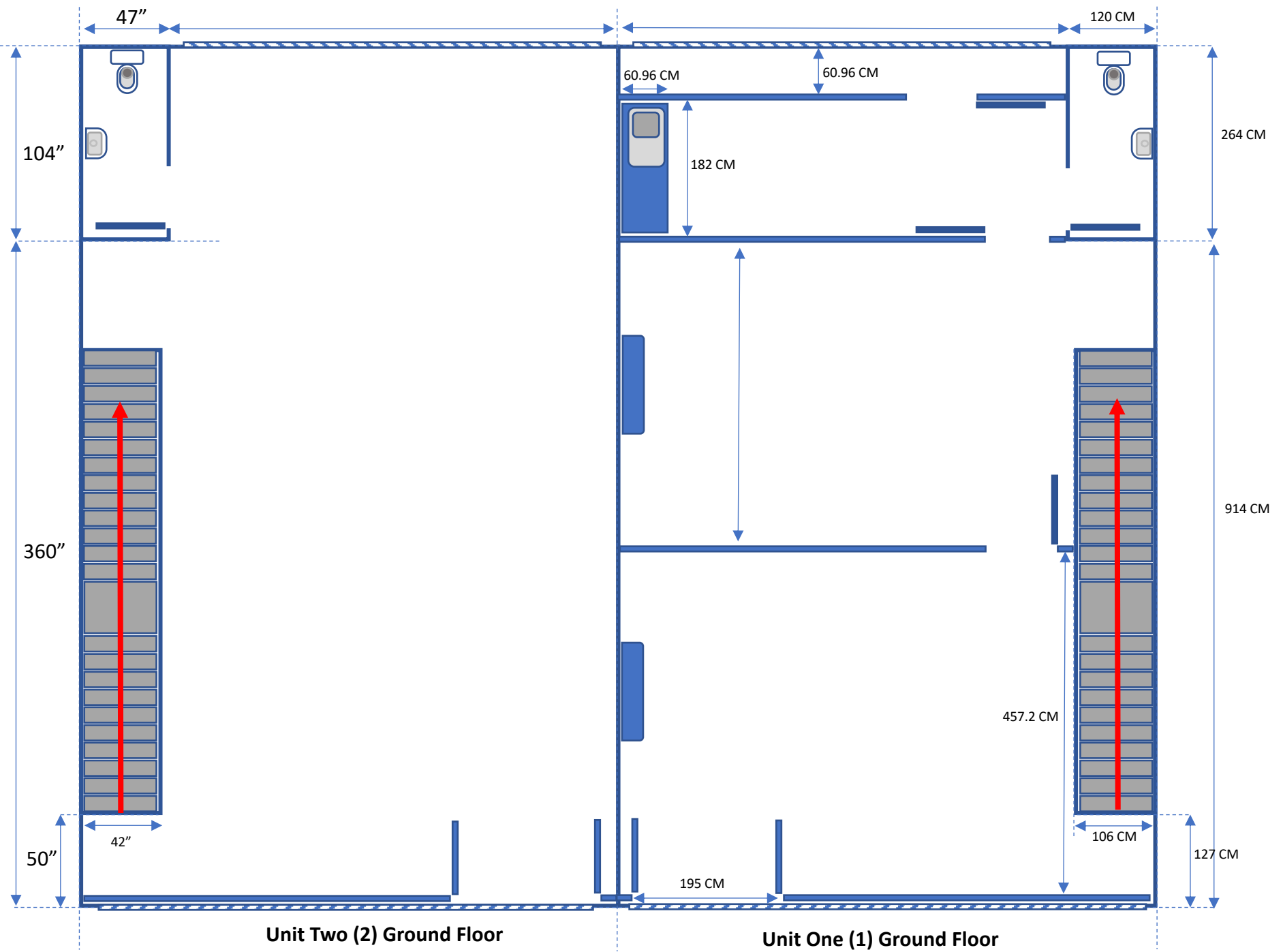
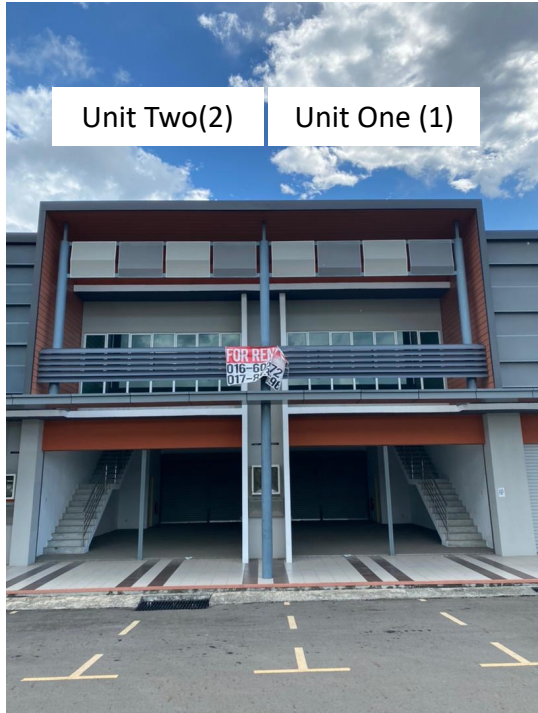


RENOVATION PURPOSES  
PHASE ONE - ADMIN OFFICE

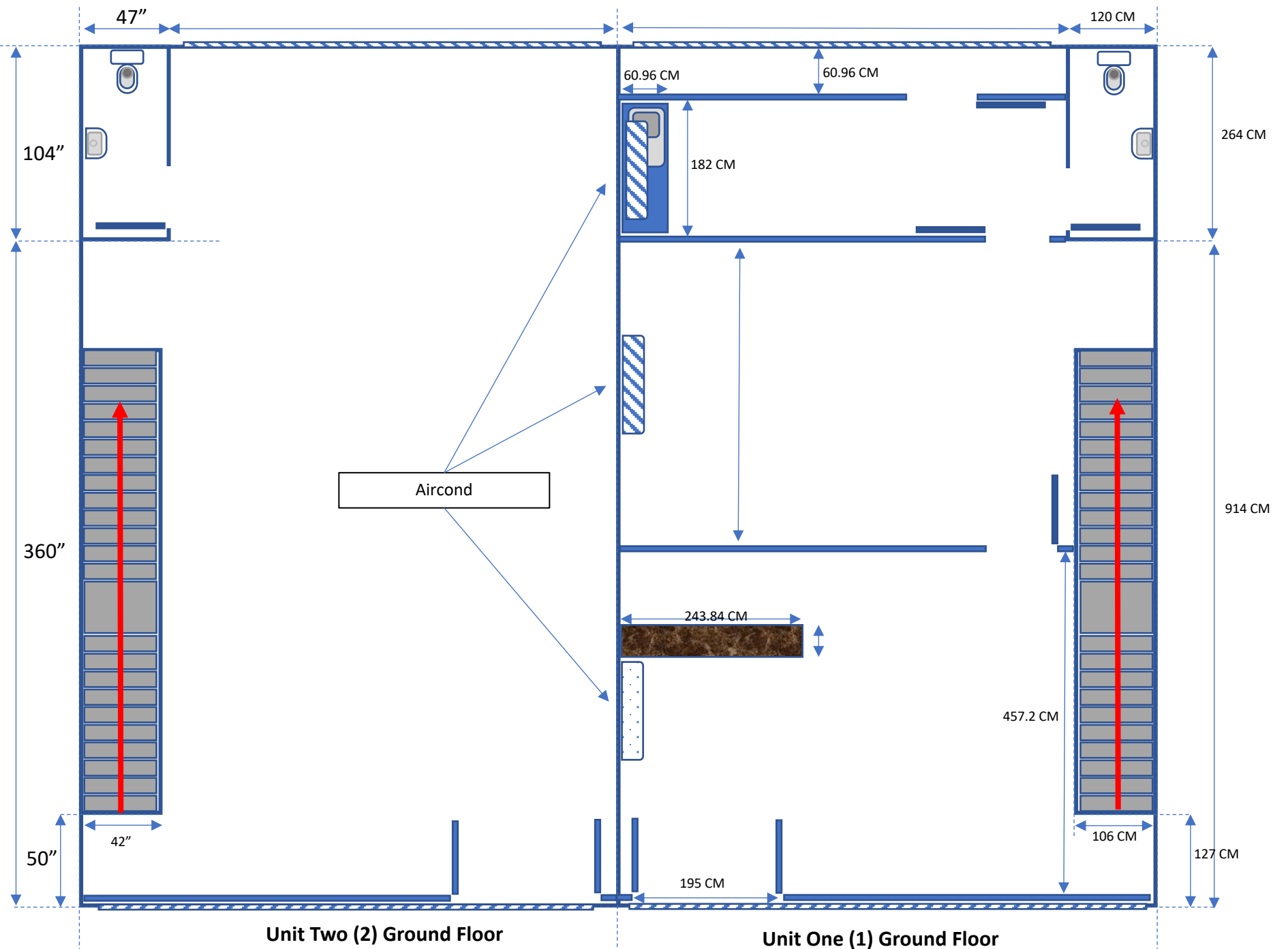
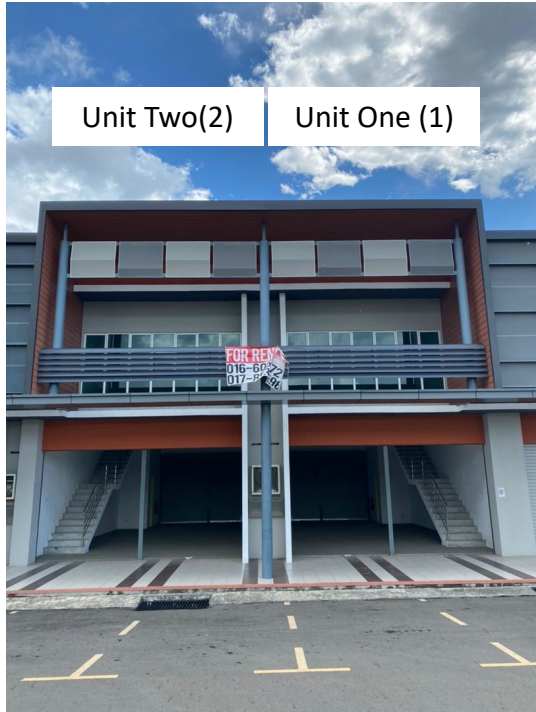
# RENOVATION WORK Ground Floor (Admin Office)



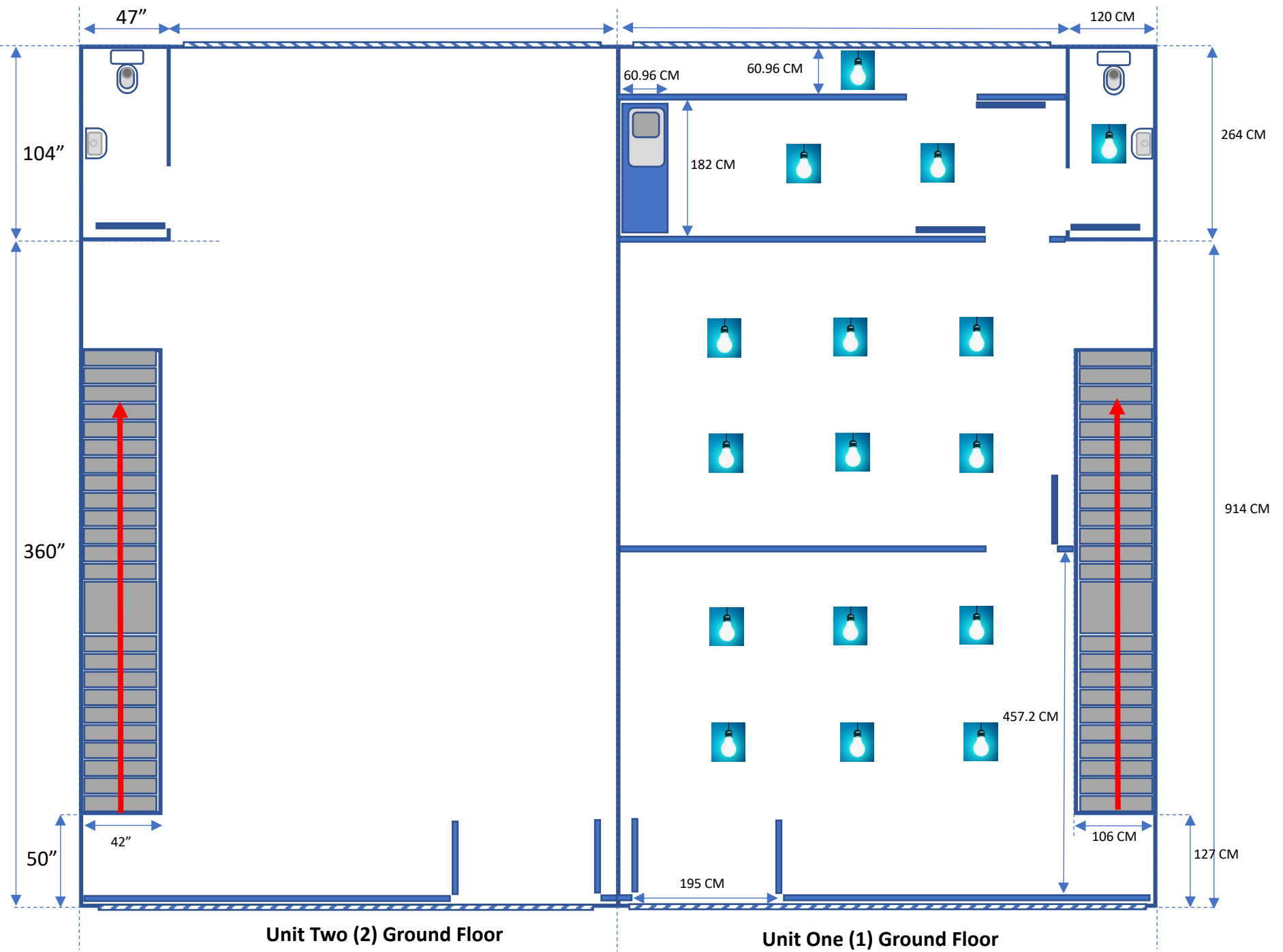
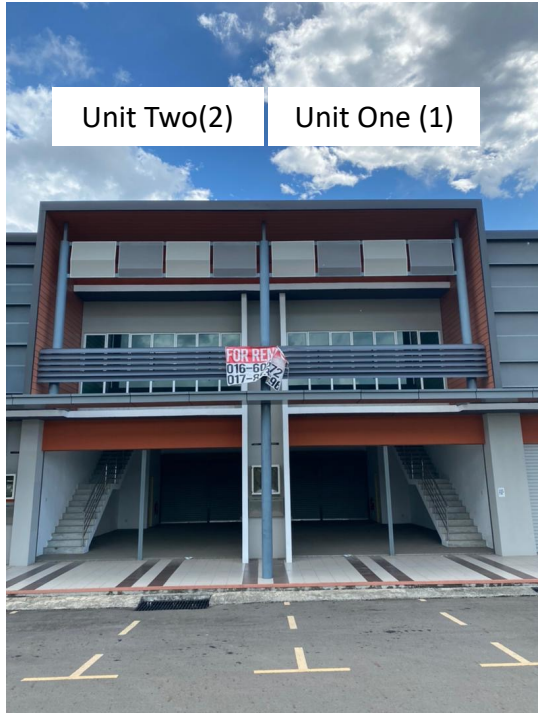
# RENOVATION WORK Ground Floor (Admin Office)



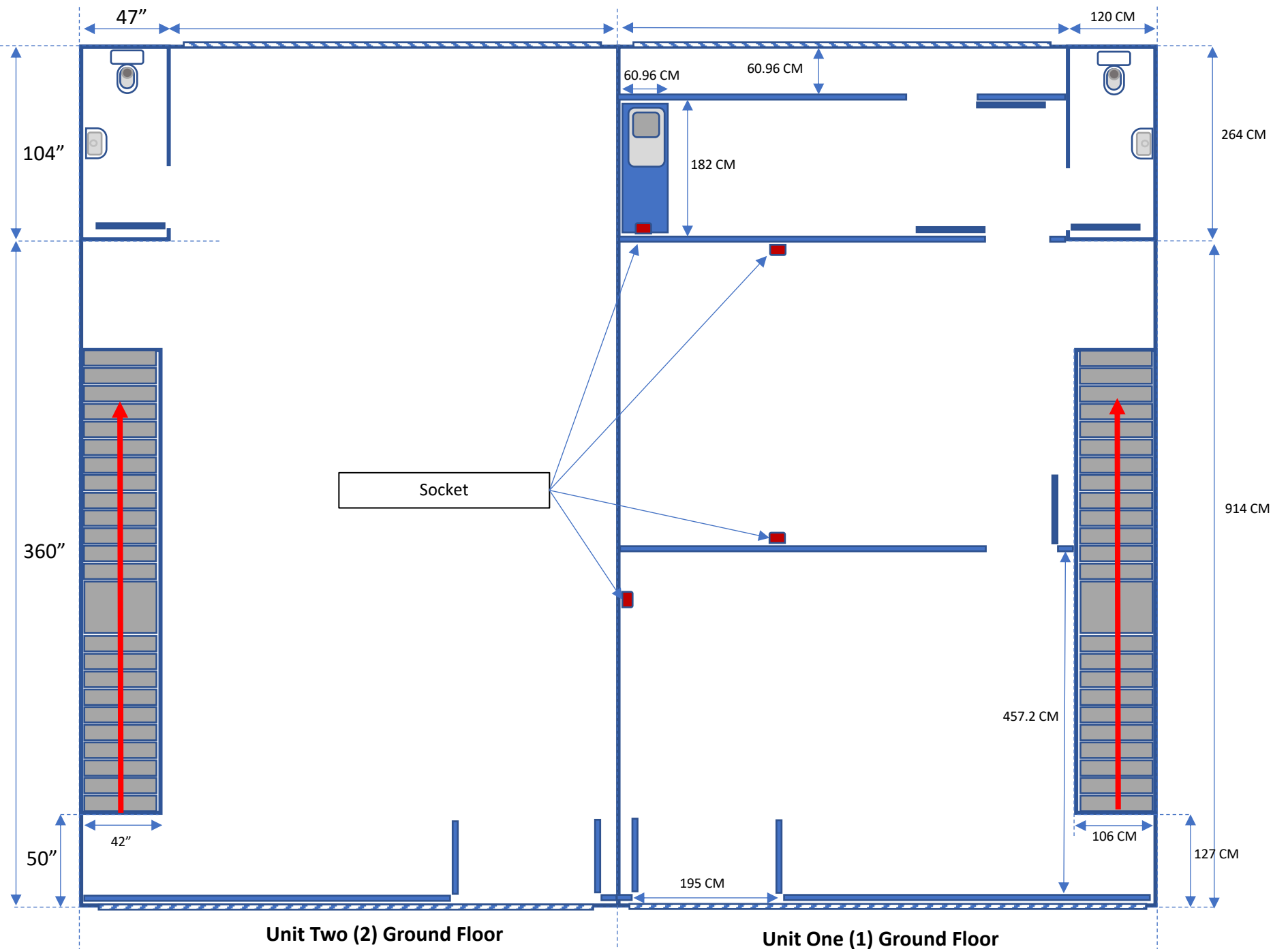
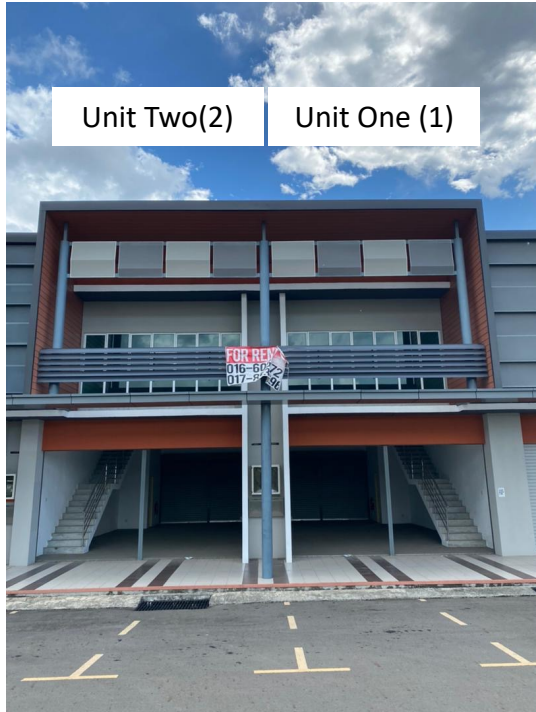
# RENOVATION WORK Ground Floor (Admin Office)



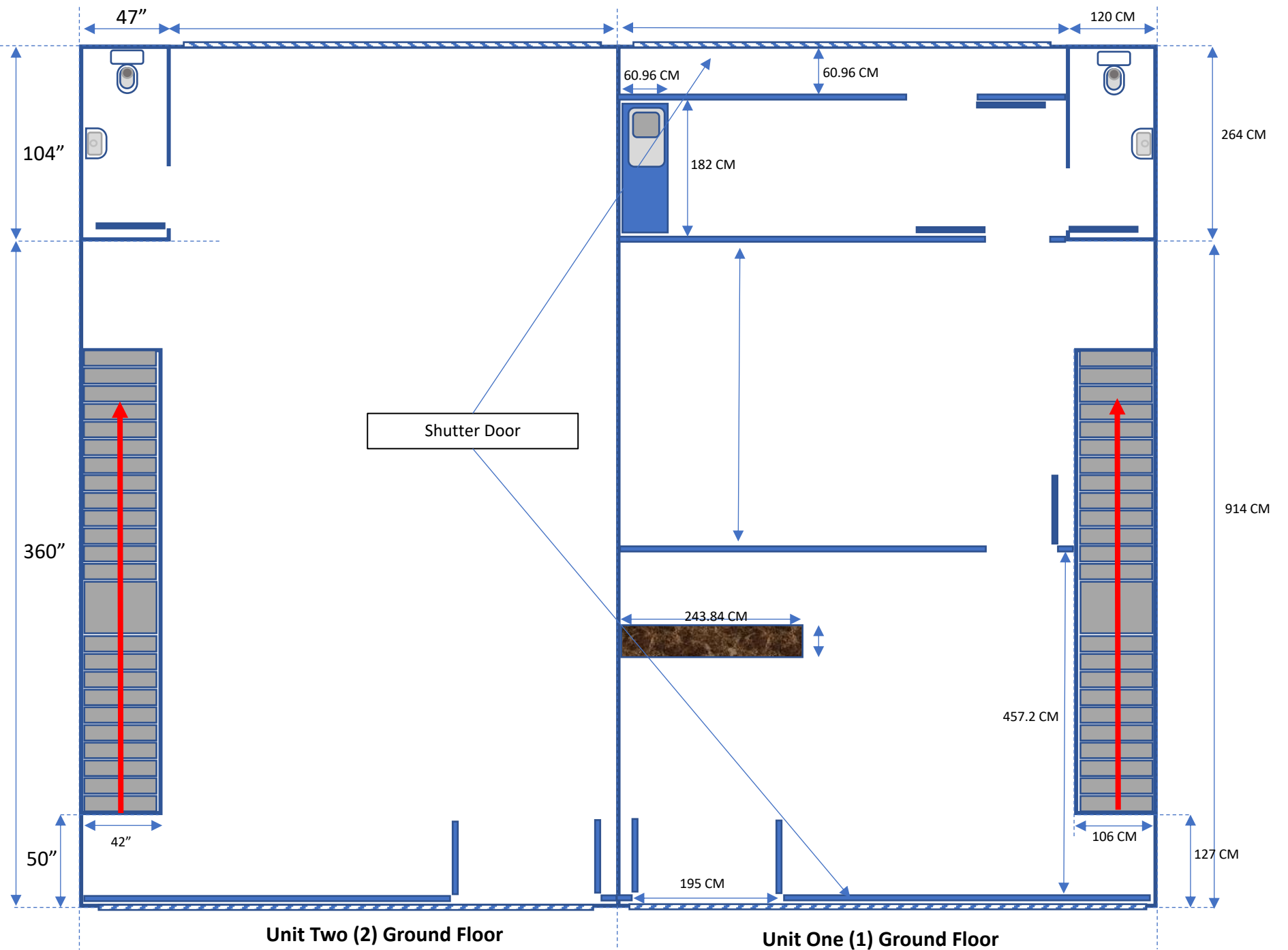
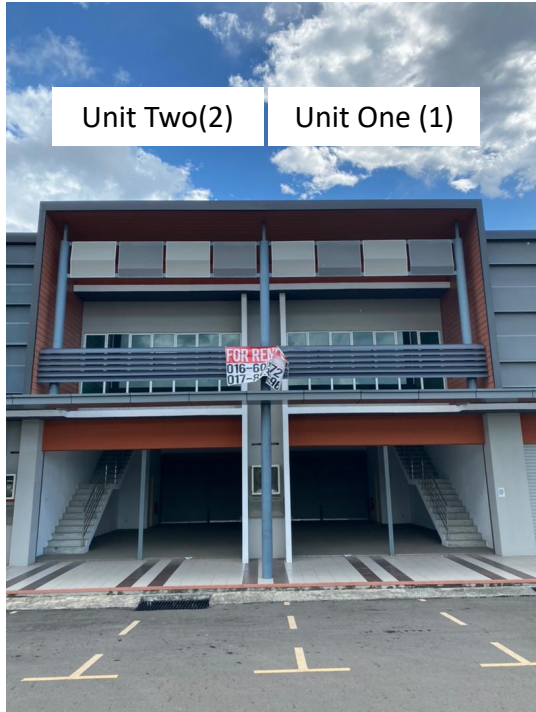
# RENOVATION WORK Ground Floor (Admin Office)



# RENOVATION WORK Ground Floor (Admin Office)



# RENOVATION WORK Ground Floor (Admin Office)





SEBELUM



SELEPAS



SEBELUM



SELEPAS



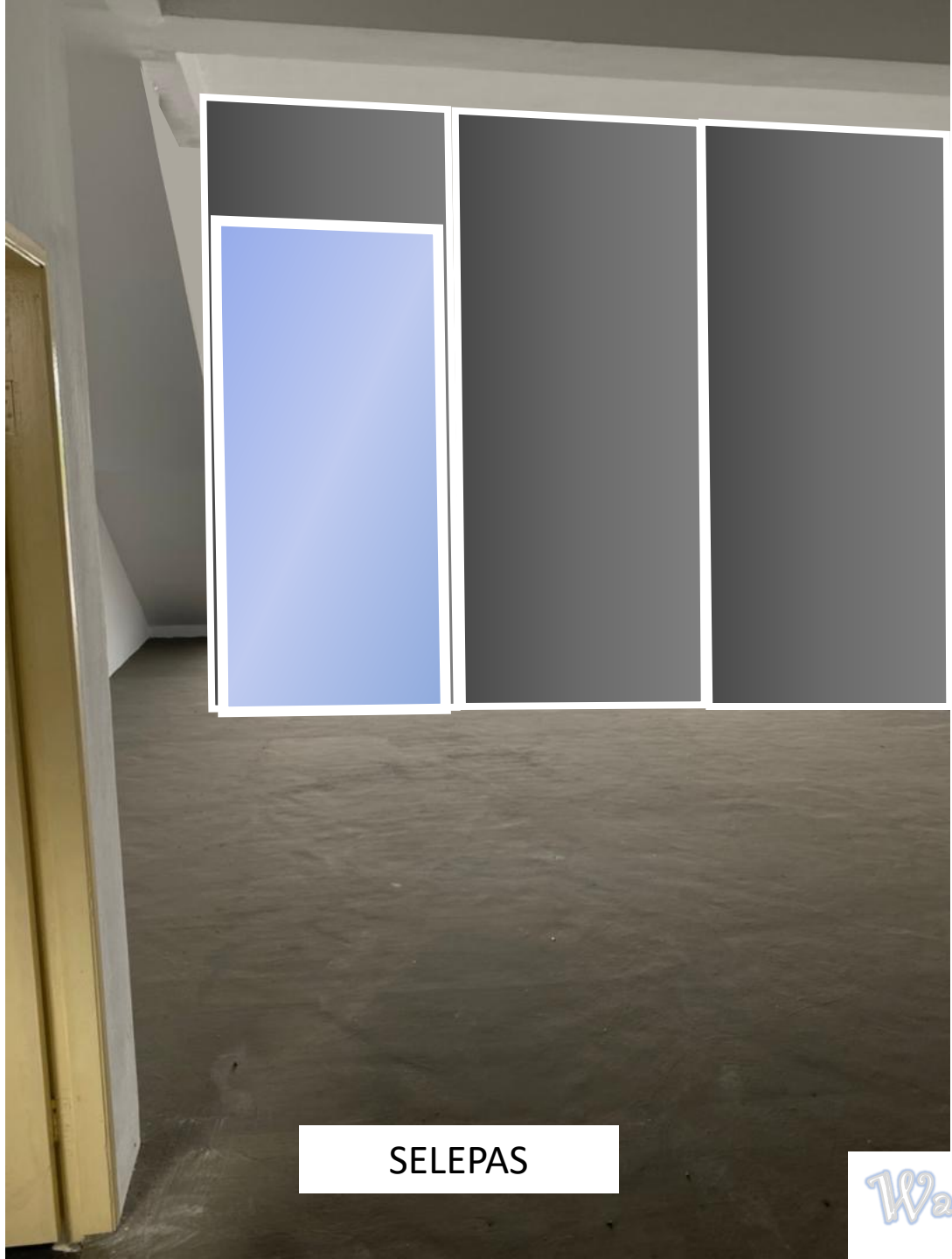
SEBELUM



SELEPAS



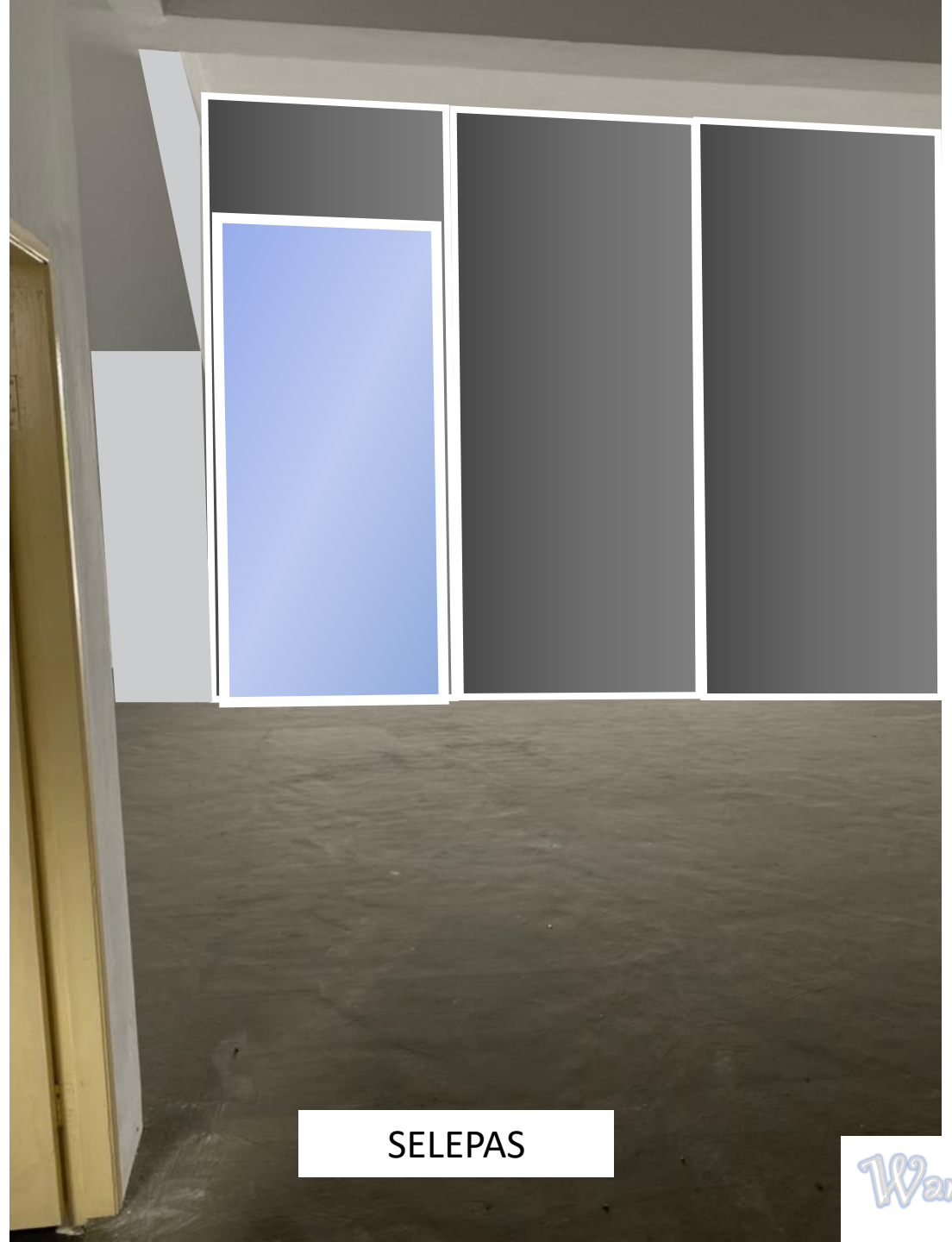
SEBELUM



SELEPAS



SEBELUM



SELEPAS

RENOVATION PURPOSES  
PHASE ONE - ADMIN OFFICE

## General Description

### Front Door (Main Door)

All glass type (swing – multi direction), the door should behind shutter door (front-side shutter door remain & functional)



## **Administrative Door**

Swing type glass framed with coated white aluminium.



**Pantry Door (x2)**

Ordinary plywood door painted with grey paint (back-side shutter door remain & functional)

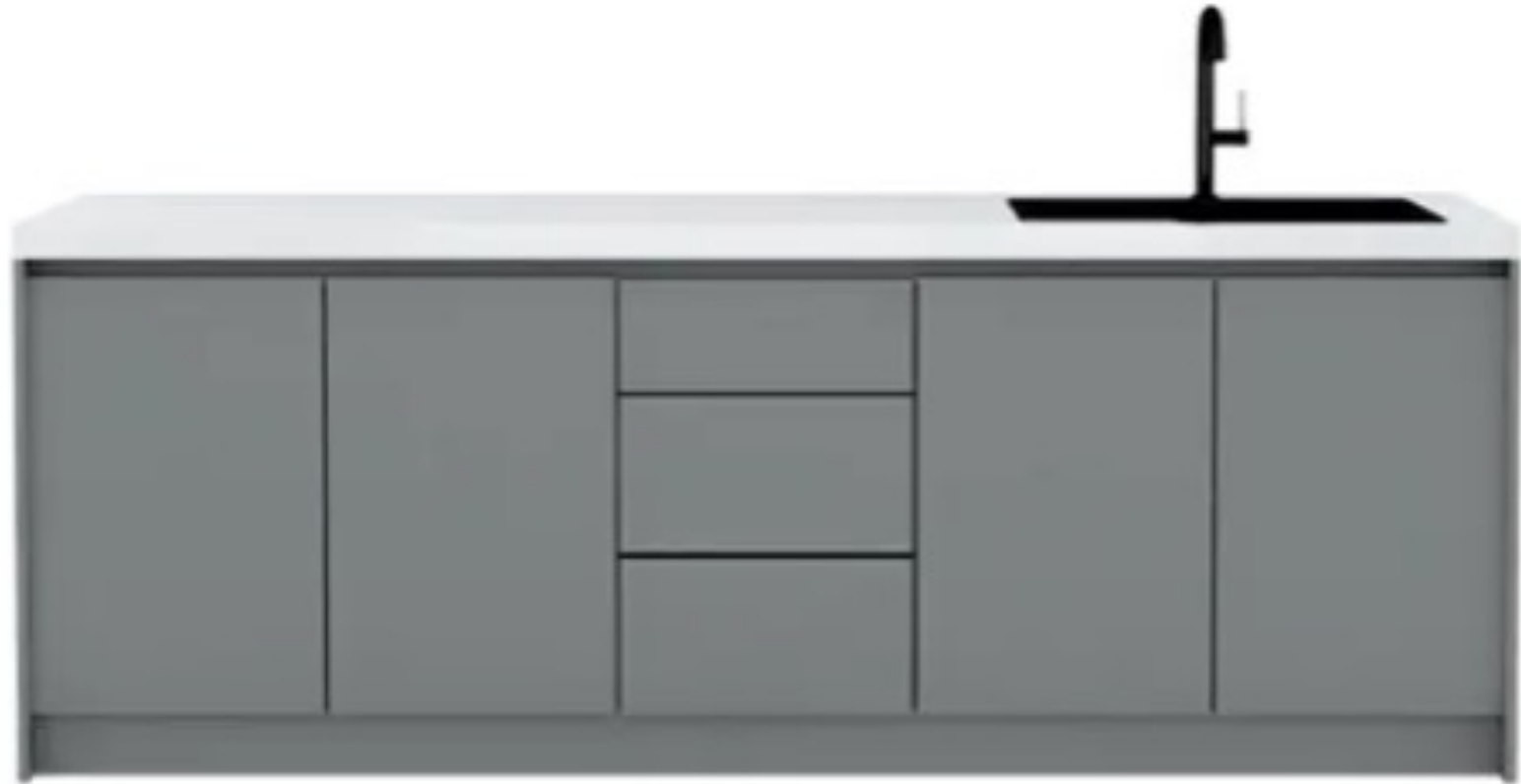


**Air conditioner**

3 x wall mounted type (2x 1.5 Hp & 1x 1Hp (Pantry))

**Pantry Cabinet**

Single bowl hardtop with Formica + drawer and door compartment



## **Ceilings**

Suspended hanging type

## **Wall**

All partition is gypsum (except wall behind the Reception counter - Glass wall with aluminium frame)

## **Flooring**

All vinyl



## Lighting

Down light led concealed to ceiling

## Lobby Under Stair (Storage) Door

Vented Type Aluminium.



## Reception Counter

