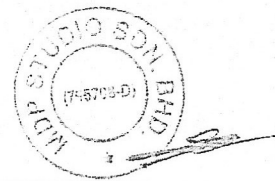
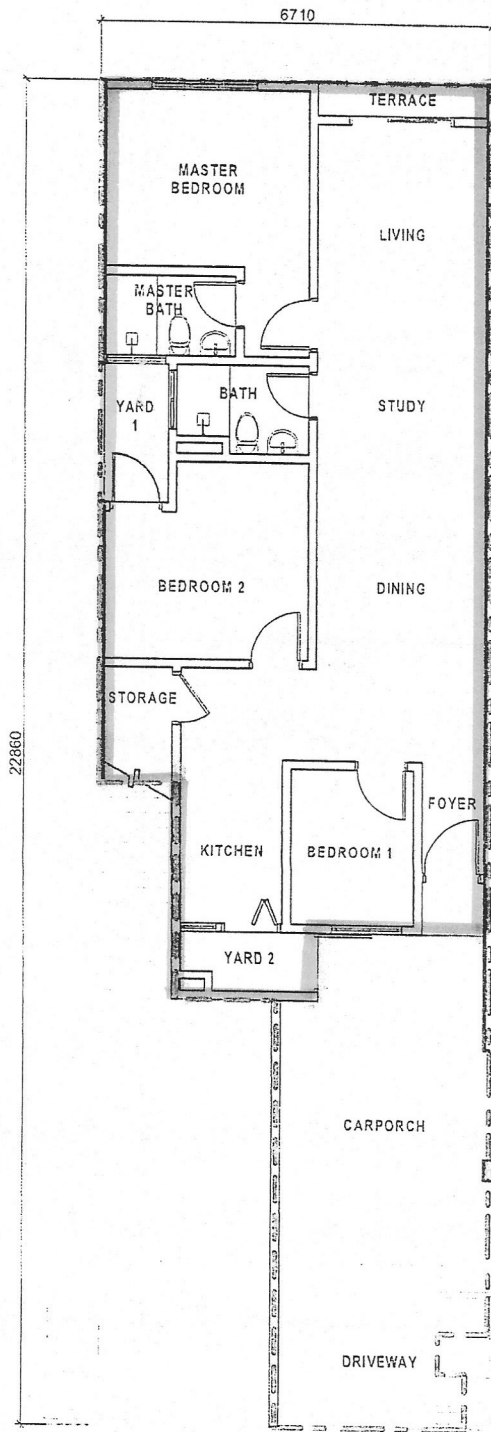
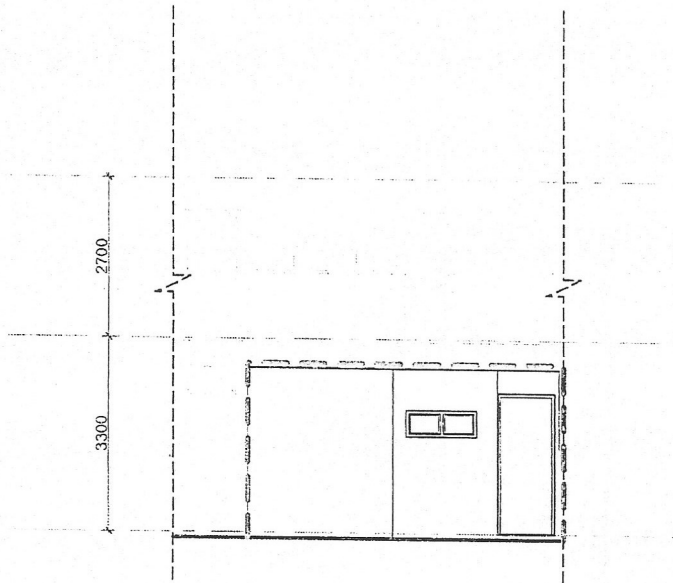


NOTE:  
 All information is subjected to change  
 as maybe required by the Local  
 Authorities & Developer's Architect.

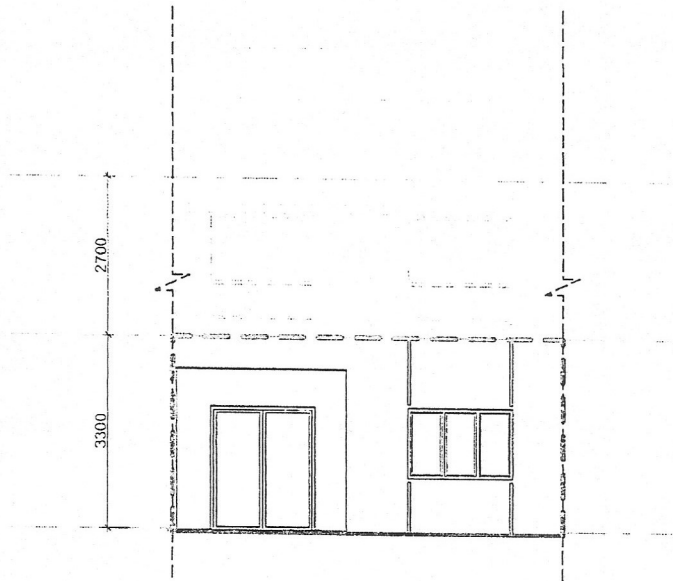


TYPE	TOWNHOUSE : TYPE A (INTERMEDIATE UNIT)						FLOOR PLAN			
	2-G	3A-G	6-G	10-G	12-G	13A-G	18-G	20-G	22-G	26-G
	28-G	32-G	33A-G	36-G	40-G	42-G	43A-G	46-G	50-G	52-G
	56-G	58-G	60-G	63A-G	66-G	68-G	70-G	73A-G	76-G	78-G
	80-G	83A-G	86-G	88-G	90-G	93A-G	98-G	100-G	102-G	103A-G
	108-G	110-G	112-G	116-G	118-G	120-G	122-G	126-G	128-G	130-G

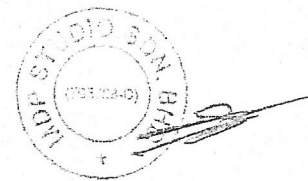
NOTE:  
 All information is subjected to change  
 as maybe required by the Local  
 Authorities & Developer's Architect.



FRONT ELEVATION

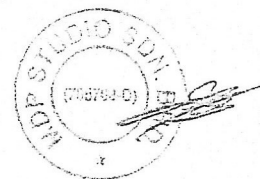
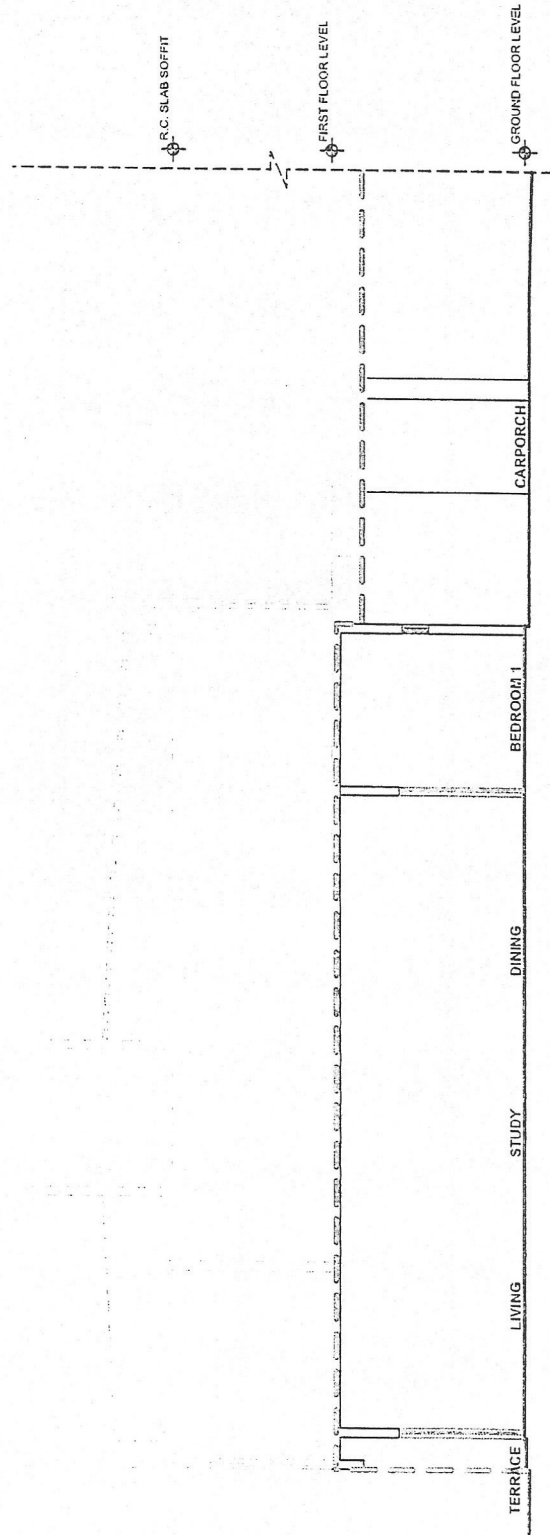


REAR ELEVATION



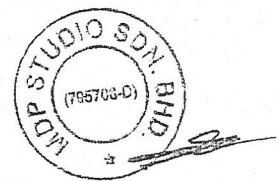
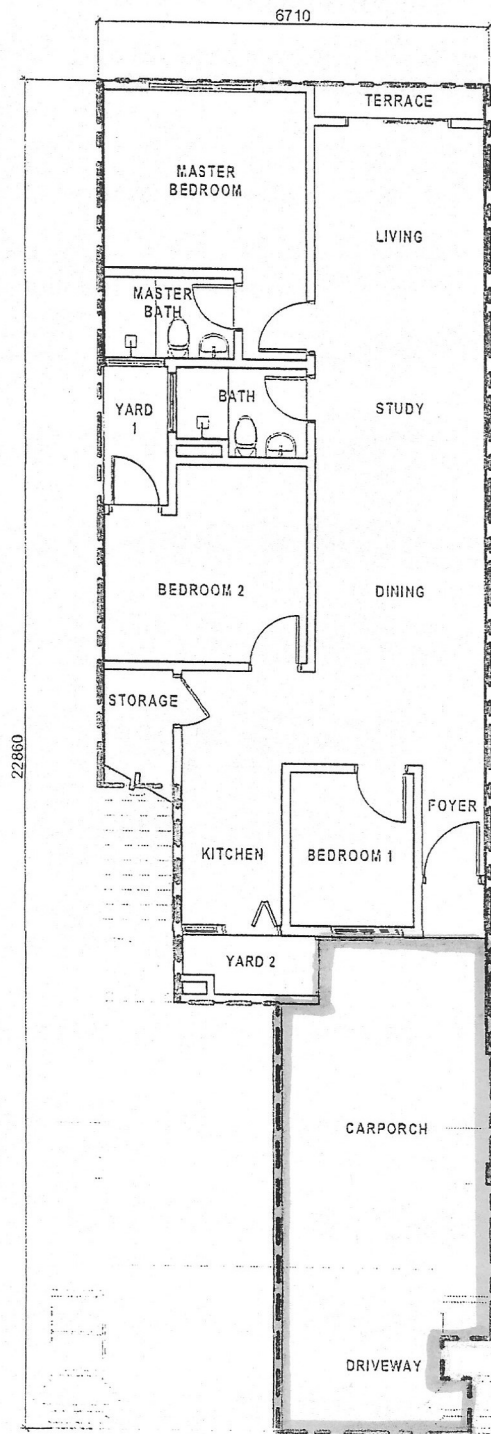
TYPE	TOWNHOUSE : TYPE A (INTERMEDIATE UNIT)						FRONT & REAR ELEVATIONS			
	2-G	3A-G	6-G	10-G	12-G	13A-G	18-G	20-G	22-G	26-G
	28-G	32-G	33A-G	36-G	40-G	42-G	43A-G	46-G	50-G	52-G
	56-G	58-G	60-G	63A-G	66-G	68-G	70-G	73A-G	76-G	78-G
	80-G	83A-G	86-G	88-G	90-G	93A-G	98-G	100-G	102-G	103A-G
	108-G	110-G	112-G	116-G	118-G	120-G	122-G	126-G	128-G	130-G

NOTE:  
All information is subjected to change  
as maybe required by the Local  
Authorities & Developer's Architect.



TYPE	TOWNHOUSE : TYPE A (INTERMEDIATE UNIT)						SECTION			
	2-G	3A-G	6-G	10-G	12-G	13A-G	18-G	20-G	22-G	26-G
	28-G	32-G	33A-G	36-G	40-G	42-G	43A-G	46-G	50-G	52-G
	56-G	58-G	60-G	63A-G	66-G	68-G	70-G	73A-G	76-G	78-G
	80-G	83A-G	86-G	88-G	90-G	93A-G	98-G	100-G	102-G	103A-G
	108-G	110-G	112-G	116-G	118-G	120-G	122-G	126-G	128-G	130-G

Note:  
 All information is subjected to change  
 as maybe required by the Local  
 Authorities & Developer's Architect.



TYPE	TOWNHOUSE : TYPE A (INTERMEDIATE UNIT)						FLOOR PLAN				
	2-G	3A-G	6-G	10-G	12-G	13A-G	18-G	20-G	22-G	26-G	
	28-G	32-G	33A-G	36-G	40-G	42-G	43A-G	46-G	50-G	52-G	
	56-G	58-G	60-G	63A-G	66-G	68-G	70-G	73A-G	76-G	78-G	
	80-G	83A-G	86-G	88-G	90-G	93A-G	98-G	100-G	102-G	103A-G	
	108-G	110-G	112-G	116-G	118-G	120-G	122-G	126-G	128-G	130-G	