

SCIENTEX®

KUNDANG JAYA

*Discover Your Signature Home,
Your Perfect Oasis*



3 STOREY TERRACE HOUSE | FREEHOLD

Open for Registration

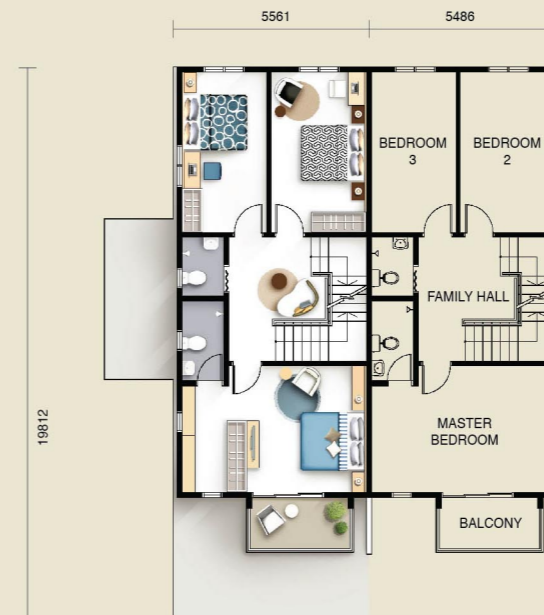


Sakura

Signature

A Welcoming Family Sanctuary –

Sakura Signature is not just a house; it's a welcoming sanctuary where families can make lasting memories. Our home has been meticulously crafted to cater to the needs of families, with ample spacious areas that are perfect for spending quality time together. Whether you're relaxing for a movie night in the cozy private family room or hosting guests in the living area, Sakura Signature will make you feel right at home.



Land Size: 18' x 65'
Built Up Area: 2,035 sq. ft.

4 Bedrooms | 3 Bathrooms | Multipurpose Hall



*Artist's impression only

Specification

Structure	Reinforced concrete			
Wall	Block/ Brick/ Concrete wall with skim coat/ lightweight block/ plaster and paint			
Roofing Covering	Concrete roof tiles/ RC flat roof			
Roof Framing	Proprietary trusses			
Ceiling	Plaster ceiling/ Ceiling board/ Skim coat			
Windows	Metal framed glass window / Metal louvre window			
Doors	Flush door/ Metal framed sliding door/ Folding door			
Ironmongery	Selected lockset			
Wall Finishes	Selected paint on walls			
	Selected tiles up to 1500mm (H) to bathrooms wall			
	Selected tiles up to 1500mm (H) to kitchen wall			
Floor Finishes	Selected tiles to living, dining, kitchen, bedrooms, bathrooms, staircase, family areas, balcony, terrace (Corner Lot)			
	Cement render to all other areas			
Sanitary and Plumbing Fitting	Selected sanitary wares with fittings			
Electrical Installation	Description	Intermediate	Corner Lot	End Lot
	Ceiling lighting point:	20	21	20
	Ceiling fan point:	4	4	4
	13A switch socket outlet:	12	12	12
	TV socket point:	1	1	1
Internal Telecommunication Trunking and Cabling	One (1) point ready with conduit only			
Fencing	Painted low wall with grille and chain link fence			
Turfing	Provided			
Gas Piping	Not provided			

